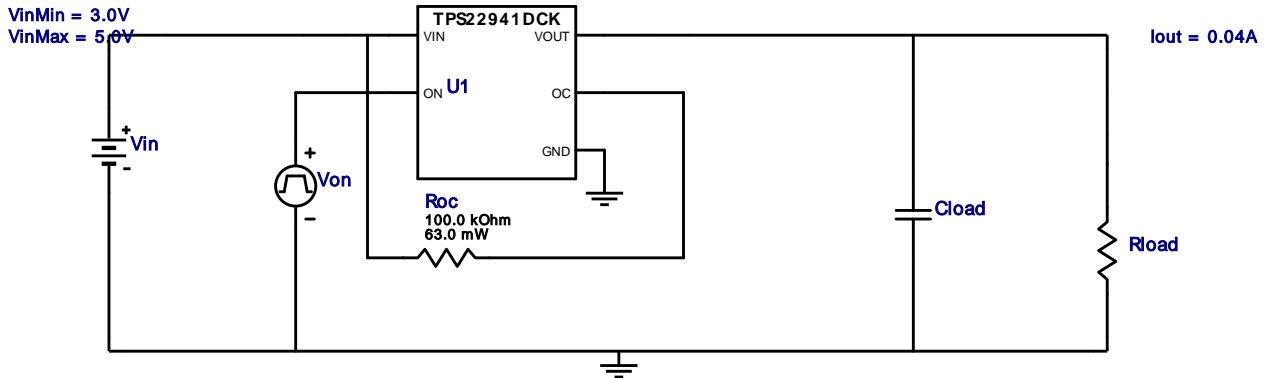


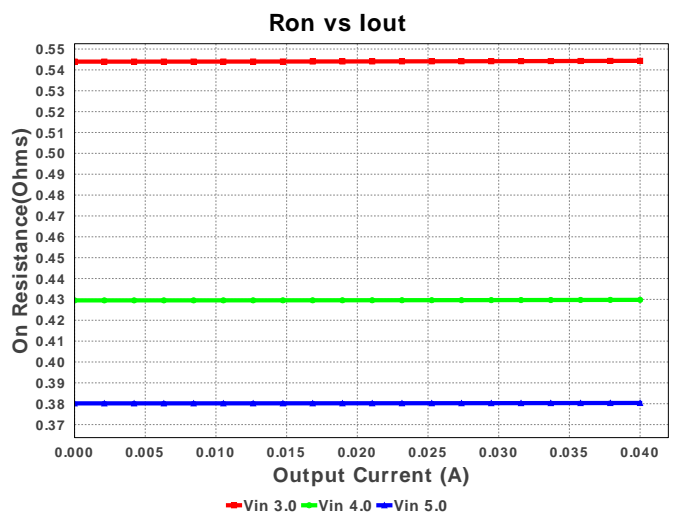
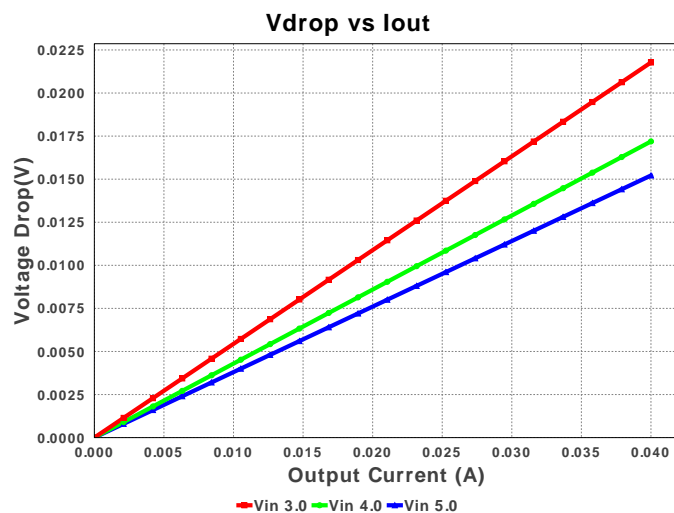
WEBENCH[®] Design Report

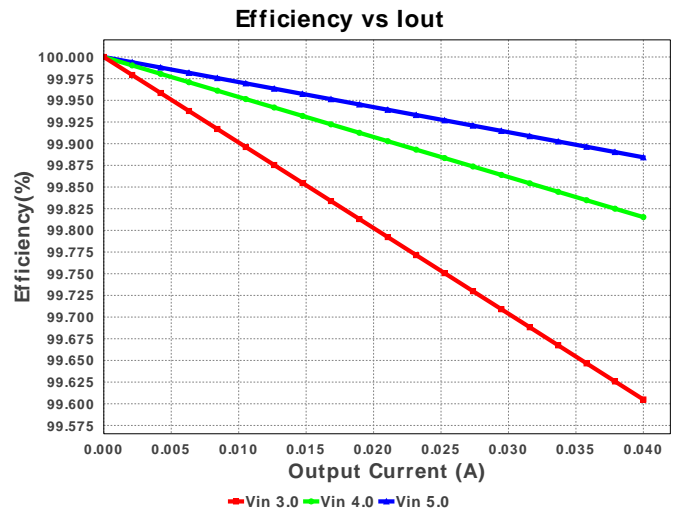
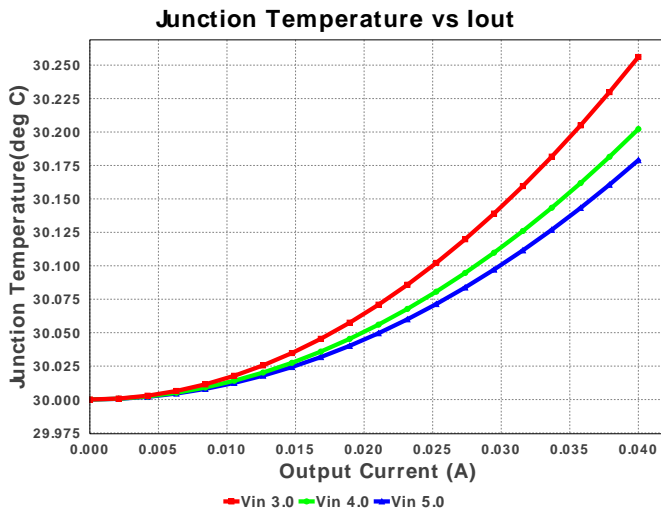
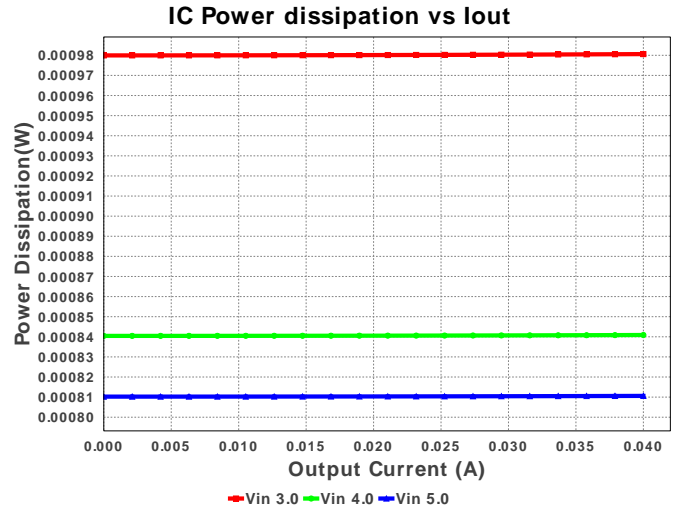
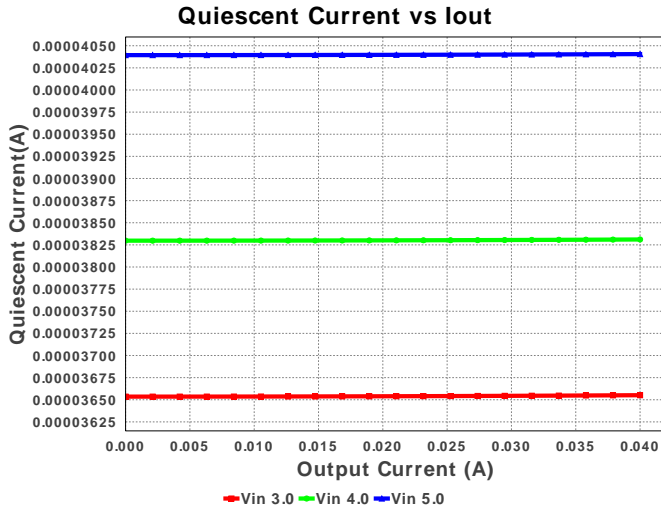
 Design : 1836019/19 TPS22941DCKR
 Design 19 - TPS22941DCKR


1. To limit the voltage drop on the input supply caused by transient in-rush currents when the switch turns on into a discharged load capacitor or a short circuit, it is generally recommended to have a capacitor of at least $C_{load} \times 10$ between VIN and GND.

Electrical BOM

#	Name	Manufacturer	Part Number	Properties	Qty	Price	Footprint
1.	Roc	Vishay-Dale	CRCW0402100KFKED Series= CRCW..e3	Res= 100.0 kOhm Power= 63.0 mW Tolerance= 1.0%	1	\$0.01	0402 3 mm ²
2.	U1	Texas Instruments	TPS22941DCKR	Switcher	1	\$0.36	R-PDSO-G5 16 mm ²





Operating Values

#	Name	Value	Category	Description
1.	BOM Count	2	General	Total Design BOM count
2.	FootPrint	19.0 mm ²	General	Total Foot Print Area of BOM components
3.	Inrush Current	80.0 mA	General	User entered Inrush Current
4.	Pout	199.392 mW	General	Total output power
5.	Total BOM	\$0.37	General	Total BOM Cost
6.	Cload Act	100.0 nF	Op_Point	Cload (Actual)
7.	Ron Act	380.172 mOhm	Op_Point	Ron (Actual)
8.	SlewRate Act	348.936 mV/us	Op_Point	Change in volt per unit time
9.	Tfall Act	22.329 μs	Op_Point	Fall time
10.	Trise Act	10.0 μs	Op_Point	Rise time
11.	Vdrop Act	15.207 mV	Op_Point	Voltage drop
12.	Efficiency	99.696 %	Op_point	Steady state efficiency
13.	IOUT_OP	40.0 mA	Op_point	Iout operating point
14.	VIN_OP	5.0 V	Op_point	Vin operating point
15.	Total Pd	810.243 μW	Power	Total Power Dissipation
16.	Actual Inrush Current	66.894 mA	Unknown	Calculated Inrush Current based on design conditions

Design Inputs

#	Name	Value	Description
1.	Iout	40.0 m	Maximum Output Current
2.	Iout	40.0 m	Maximum Output Current
3.	Iout1	40.0 m	Output Current #1
4.	VinMax	5.0	Maximum input voltage
5.	VinMin	3.0	Minimum input voltage
6.	Vout1	1.0 m	Output Voltage #1
7.	base_pn	TPS22941	Base Product Number
8.	cload	100.0 m	Minimum load capacitance user requirement
9.	inrush_Current	80.0 m	Inrush current
10.	source	DC	Input Source Type
11.	Ta	30.0	Ambient temperature

#	Name	Value	Description
12.	vdrop_max	200.0 m	Maximum voltage drop user requirement

Design Assistance

1. **TPS22941** Product Folder : <http://www.ti.com/product/TPS22941> : contains the data sheet and other resources.

Texas Instruments' WEBENCH simulation tools attempt to recreate the performance of a substantially equivalent physical implementation of the design. Simulations are created using Texas Instruments' published specifications as well as the published specifications of other device manufacturers. While Texas Instruments does update this information periodically, this information may not be current at the time the simulation is built. Texas Instruments does not warrant the accuracy or completeness of the specifications or any information contained therein. Texas Instruments does not warrant that any designs or recommended parts will meet the specifications you entered, will be suitable for your application or fit for any particular purpose, or will operate as shown in the simulation in a physical implementation. Texas Instruments does not warrant that the designs are production worthy.

You should completely validate and test your design implementation to confirm the system functionality for your application prior to production.

Use of Texas Instruments' WEBENCH simulation tools is subject to [Texas Instruments' Site Terms and Conditions of Use](#). Prototype boards based on WEBENCH created designs are provided AS IS without warranty of any kind for evaluation and testing purposes and are subject to the terms of the [Evaluation License Agreement](#).